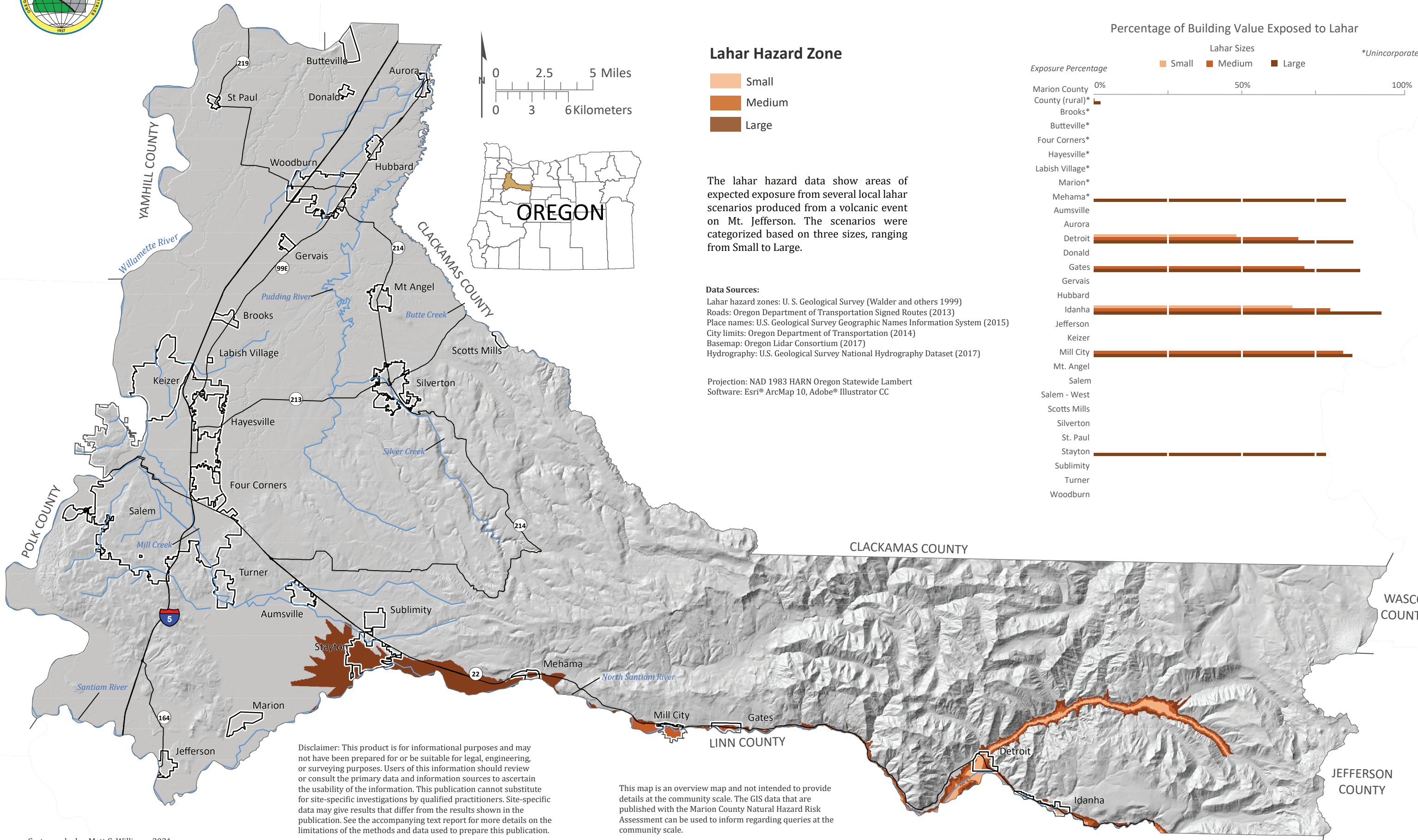




# Lahar Exposure Map of Marion County, Oregon



## Lahar Hazard Zone

- Small
- Medium
- Large

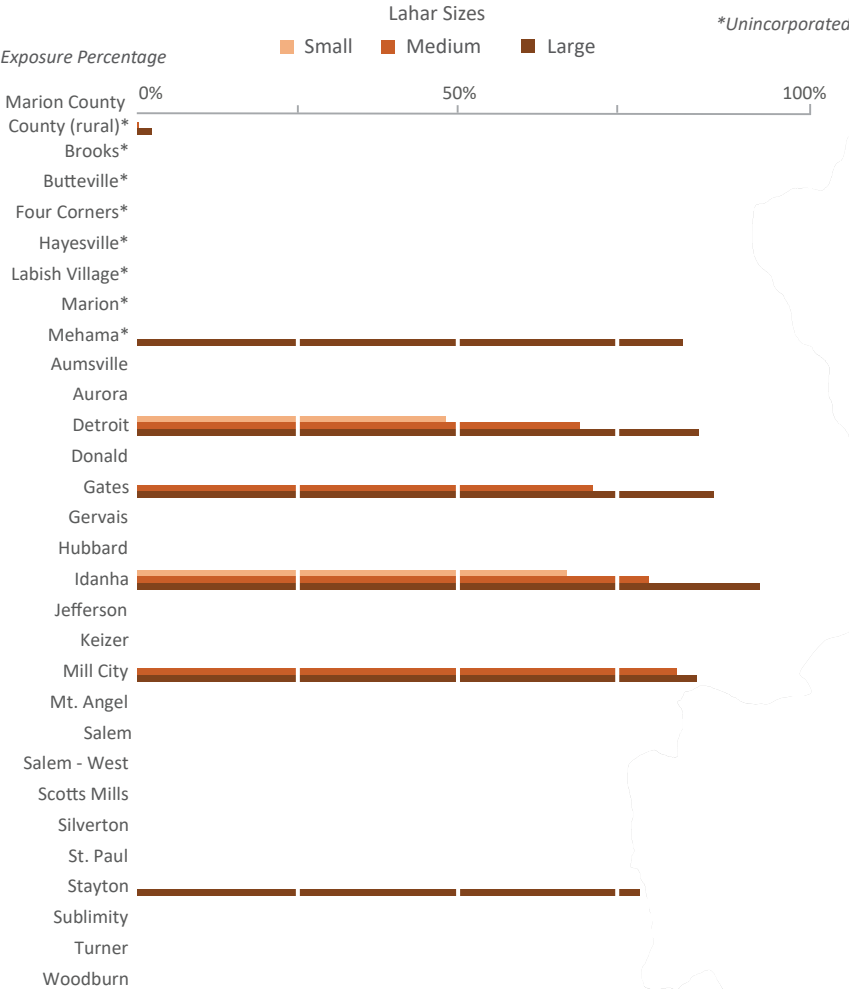
The lahar hazard data show areas of expected exposure from several local lahar scenarios produced from a volcanic event on Mt. Jefferson. The scenarios were categorized based on three sizes, ranging from Small to Large.

### Data Sources:

Lahar hazard zones: U. S. Geological Survey (Walder and others 1999)  
Roads: Oregon Department of Transportation Signed Routes (2013)  
Place names: U.S. Geological Survey Geographic Names Information System (2015)  
City limits: Oregon Department of Transportation (2014)  
Basemap: Oregon Lidar Consortium (2017)  
Hydrography: U.S. Geological Survey National Hydrography Dataset (2017)

Projection: NAD 1983 HARN Oregon Statewide Lambert  
Software: Esri® ArcMap 10, Adobe® Illustrator CC

## Percentage of Building Value Exposed to Lahar



Disclaimer: This product is for informational purposes and may not have been prepared for or be suitable for legal, engineering, or surveying purposes. Users of this information should review or consult the primary data and information sources to ascertain the usability of the information. This publication cannot substitute for site-specific investigations by qualified practitioners. Site-specific data may give results that differ from the results shown in the publication. See the accompanying text report for more details on the limitations of the methods and data used to prepare this publication.

This map is an overview map and not intended to provide details at the community scale. The GIS data that are published with the Marion County Natural Hazard Risk Assessment can be used to inform regarding queries at the community scale.